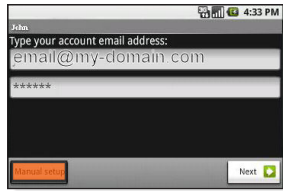


Setting Up Android™ Email

Setting Up an POP3 Email Account

1. From the Home screen, tap the Application button.
2. Tap the [Email](#) icon.
3. If this is your first email account, you will be presented with an email setup screen. Tap the [Next](#) button. Otherwise, press the Menu button, and tap the [Add Account](#) button.

4. In the “[Type your account email address](#)” box, enter your full email address, e.g., email@my-domain.com.



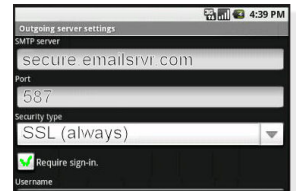
5. In the second box, enter your email account password.
6. Tap the “[Manual setup](#)” button.
7. Tap the “[POP account](#)” button.
8. Enter the following information in the spaces provided:

- Username—Enter your full email address.
- Password—Enter your email account password.
- POP server—Enter the name of the secure email server: *secure.emailsrvr.com*
- Port—Enter the secure port number: *995*
- Security type—Select the security: *SSL (always)*

Note: Ensure Port is still *995*.

9. Tap the [Next](#) button. The device will connect to the internet and check your incoming settings.

10. On the “[Outgoing server settings](#)” screen, enter the following information in the spaces provided:

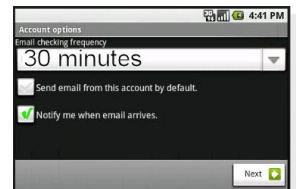


- SMTP server—Enter the name of the secure email server: *secure.emailsrvr.com*
- Port—Enter the secure port number: *587*
- Security type—Select the security: *SSL (always)*

Note: Ensure Port is still *587*.

11. Tap the “[Require sign-in](#)” checkbox.
12. In the [Username](#) box, enter your full email address.
13. In the [Password](#) box, enter your email account password.
14. Tap the [Next](#) button. The device will connect to the internet and check your outgoing settings.

15. On the “[Account options](#)” screen, select your “[Email checking frequency](#).”



Note: This frequency will impact battery life.

16. Tap the “[Notify me when email arrives](#)” checkbox to see an alert on the status bar when you have new email.
17. Name your account as desired.
18. Enter your name as you want it displayed in email.